

PART OF THE SW. 1/4, OF SECTION 27, T.7N., R.1E., S.L.B. & M.

353

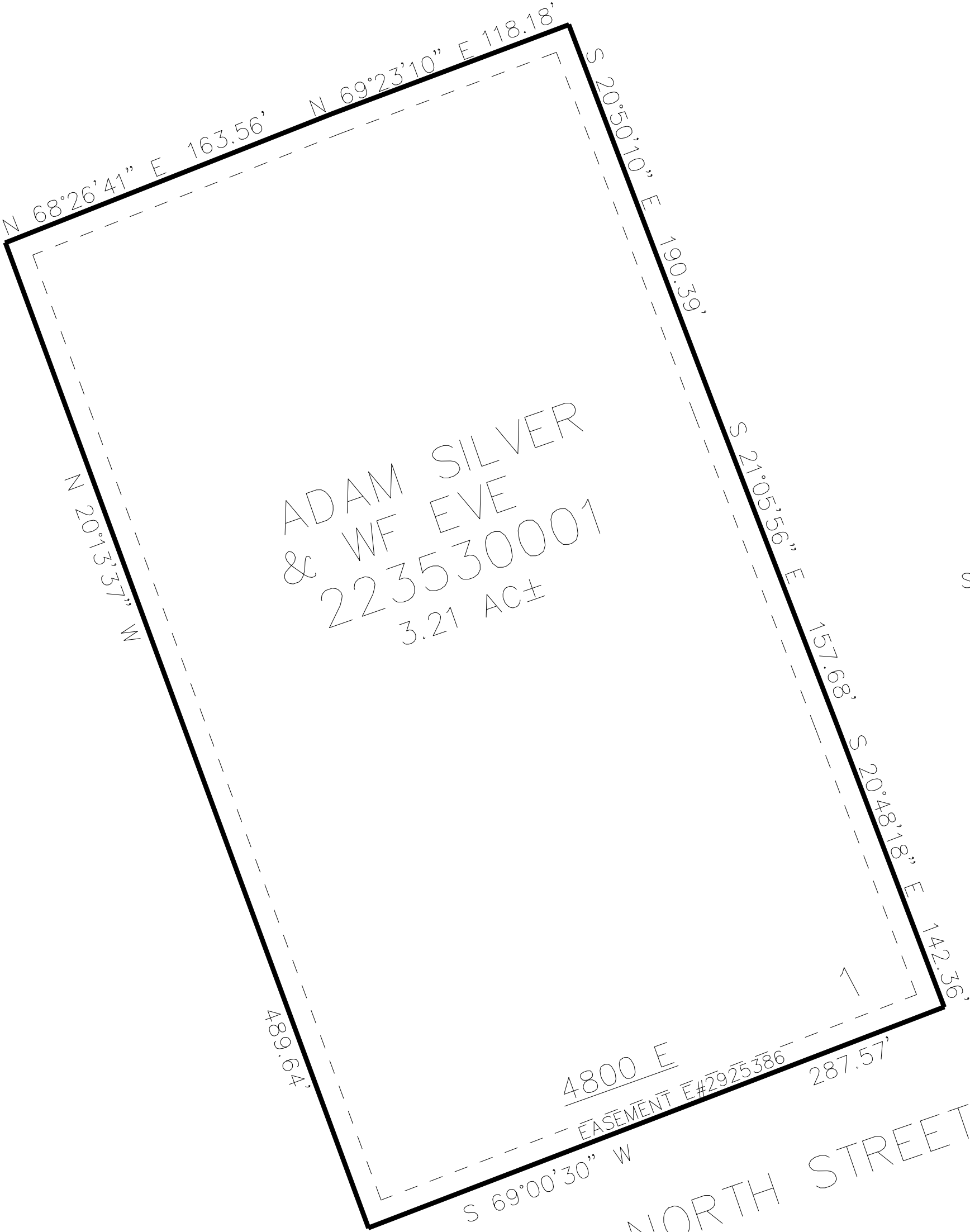
JOHN PORTER SUBDIVISION

IN WEBER COUNTY

TAXING UNIT: 28

SCALE 1" = 50'

SEE PAGE 21



SEE PAGE 189

SEE PAGE 21

10' UTILITY & DRAINAGE EASEMENTS EACH
SIDE OF PROPERTY LINES AS INDICATED
BY DASHED LINES EXCEPT AS OTHERWISE
SHOWN.

FOR COMPLETE ENG DATA SEE
ORIGINAL DEDICATION PLAT IN
BOOK 83, PAGE 39 OF RECORDS.

SEE PAGE 21